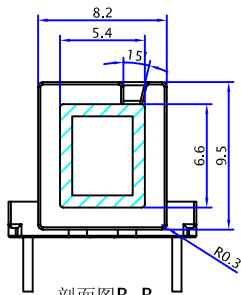
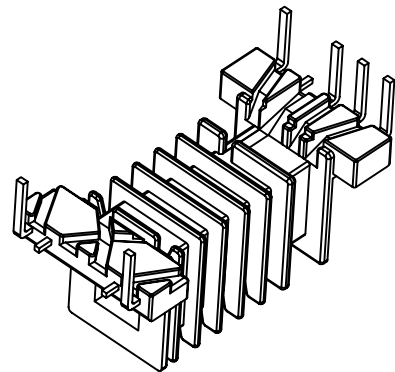
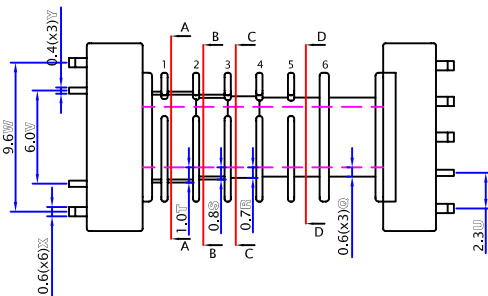
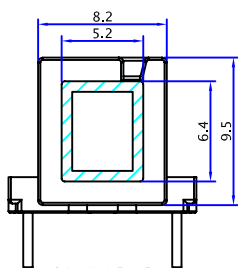
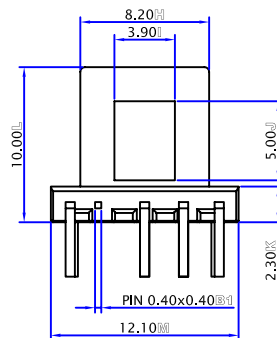
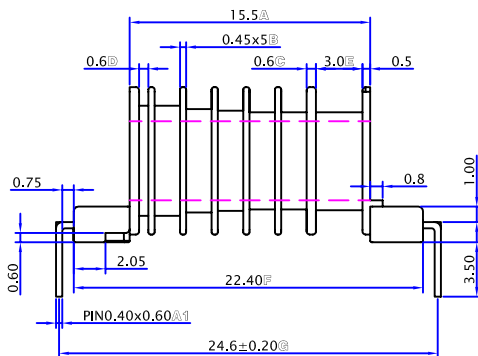


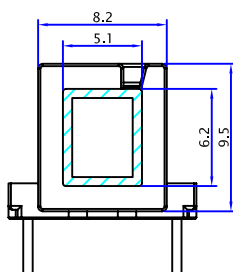
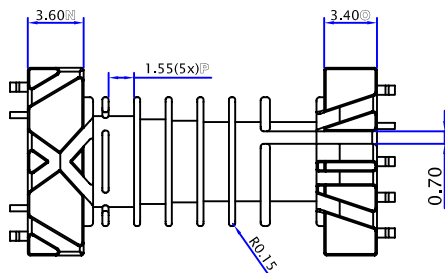
剖面图A-A



剖面图B-B



剖面图C-C



剖面图D-D

REVISIONS				
ISSUE	SYM	DATE	DRAFTER	CHECKER
NOTE:				



樹林企業股份有限公司
TAIWAN SHULIN ENTERPRISE CO., LTD

MODEL

SMD-EEL-13

MATERIAL

LCP

WEB: www.bobbin.com.tw

UL RATING

UL 94V-0

TOLERANCE

E-Mail: shulin@bobbin.com.tw

PIN MATERIAL

PHOS.B

.X ± 0.1

.XX ± 0.1

(TAIWAN TAIPEI) TEL: (886)2-2223-1500 FAX: (886)2-2222-4646

EDITION

1.0A

(CHINA DONGGUAN) TEL: (86)769-7730-785 FAX: (86)769-7312-387

DATE

2006/12/20

PIN PITCH ± 0.05

(CHINA SUZHOU) TEL: (86)512-6621-0580 FAX: (86)512-6621-0685

SCALE

1/1

UTIL

MM